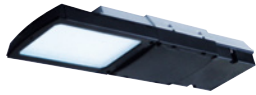


Linear luminaire ExLin

Safety and Exit Sign Luminaires - Explosion protected

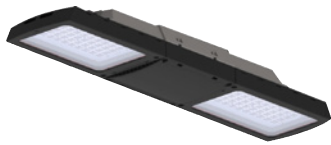


ExLin 3L-1 and 5L-1 models



6

ExLin 5L-2 and 7L-2 models



ExLin V-CG-S

- Completely monitored explosion protected LED luminaire
- Long LED module lifetime (L90 = 100.000 h at 25°C and L85=75.000h at 55°C) and durable enclosures for long-term use
- Colour temperature 5000 K and CRI > 70 as standard with the option of CRI >80 and/or colour temperature 4000 K on request
- Up to 120 lm/W provides up to 40% energy efficiency compared to traditional fluorescent fixtures
- Drop-in mounting compatibility to eLLK fluorescent – same fixing point as eLLK 2x18W and a mounting kit available for easy replacement of 2x36W and 2x58W without changing cable
- Shortened inspection effort due to CEWA GUARD technology
- Automatic function monitoring of up to 20 luminaires per circuit
- Reduced installation expenditure with STAR technology
- Freely programmable mixed operation of the switching modes per luminaire in one circuit
- Standard, narrow and wide beam optics optimise light distribution, providing light where the customer needs it with the potential to reduce the number of fixtures required (narrow and wide beam options on request)

Marking acc. to 2014/34/EU	Ex II 2G Ex eb ib op is q IIC T4/T5 Gb Ex II 2D Ex tb op is IIIC T80/110°C Db
EC-Type Examination Certificate	BVS 18 ATEX E 037 X
IECEX-inspection certificate	IECEX BVS 18.0028X
Marking acc. to IECEx	Ex eb ib op is q IIC T4 Gb Ex tb op is IIIC T80/110°C Db
Housing material	Glass fibre reinforced polyester
Protective cover	Toughened glass clear (opaque or plastic laminated glass on request)
Rated voltage	110 up to 277 V AC/DC
Rated current	96 mA (ExLin 3L-1) 191 mA (ExLin 5L-1, ExLin 5L-2*) 291 mA (ExLin 7L-2)
Power factor cos φ	≥ 0.92 (ExLin 3L-1) ≥ 0.95 (ExLin 5L-1, ExLin5L-2*, ExLin 7L-2)
Permissible ambient temperature	- 45 °C up to + 55 °C
Cable infeeds	Thread size M20 Cable sealing range min. 2.8/4.5/7.6/10.0 Cable sealing range max. 5.5/8.5/12.0/16.0
Connection terminals	T1 type 2410-4 max 6mm ²
Light source	LED array
Weight	6.7 kg ExLin 3L-1 and 5L-1 8.0 kg ExLin 5L-2* and 7L-2

Models

Type	colour temperature	Lumens	Current (mA) in DC operation			Cos φ	Order-No.
			Dimming level 100%	Dimming level 50%	Dimming level 25%		
ExLin 3L-1	5000 K	2750	96	62	43	0.92	see table below
ExLin 5L-1	5000 K	5300	191	115	73	0.95	see table below
ExLin 5L-2*	5000 K	5480	191	115	73	0.95	see table below
ExLin 7L-2	5000 K	8120	291	169	102	0.95	see table below

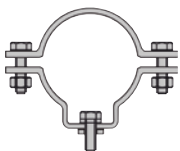
* Available on request
Delivery without mounting accessories!

Ordering details

Type	Scope of supply	Order No.
ExLin 3L-1 V-CG-S GCS 750 T1 1/6 M25K CRI 70	ExLin V-CG-S 3L-1 2750 lm single sided, glass clear standard, 1/6 M25K- single ended through wiring with M25 plastic glands	12310120101
ExLin 3L-1 V-CG-S GCS 750 T1 2/6 M25K CRI 70	ExLin V-CG-S 3L-1 2750 lm single sided, glass clear standard, 2/6 M25K- double ended through wiring with M25 plastic glands	12310120103
ExLin 3L-1 V-CG-S GCS 750 T1 1/6 M20M CRI 70	ExLin V-CG-S 3L-1 2750 lm single sided, glass clear standard, 1/6 M20M- single ended through wiring with M20 metallic threads	12310120109
ExLin 3L-1 V-CG-S GCS 750 T1 2/6 M20M CRI 70	ExLin V-CG-S 3L-1 2750 lm single sided, glass clear standard, 2/6 M20M- double ended through wiring with M20 metallic threads	12310120111
ExLin 5L-1 V-CG-S GCS 750 T1 1/6 M25K CRI 70	ExLin V-CG-S 5L-1 5300 lm single sided, glass clear standard, 1/6 M25K- single ended through wiring with M25 plastic glands	12310140101
ExLin 5L-1 V-CG-S GCS 750 T1 2/6 M25K CRI 70	ExLin V-CG-S 5L-1 5300 lm single sided, glass clear standard, 2/6 M25K- double ended through wiring with M25 plastic glands	12310140103
ExLin 5L-1 V-CG-S GCS 750 T1 1/6 M20M CRI 70	ExLin V-CG-S 5L-1 5300 lm single sided, glass clear standard, 1/6 M20M- single ended through wiring with M20 metallic threads	12310140109
ExLin 5L-1 V-CG-S GCS 750 T1 2/6 M20M CRI 70	ExLin V-CG-S 5L-1 5300 lm single sided, glass clear standard, 2/6 M20M- double ended through wiring with M20 metallic threads	12310140111
ExLin 7L-2 V-CG-S GCS 750 T1 1/6 M25K CRI 70	ExLin V-CG-S 7L-2 8120 lm double sided, glass clear standard, 1/6 M25K- single ended through wiring with M25 plastic glands	12310170101
ExLin 7L-2 V-CG-S GCS 750 T1 2/6 M25K CRI 70	ExLin V-CG-S 7L-2 8120 lm double sided, glass clear standard, 2/6 M25K- double ended through wiring with M25 plastic glands	12310170103
ExLin 7L-2 V-CG-S GCS 750 T1 1/6 M20M CRI 70	ExLin V-CG-S 7L-2 8120 lm double sided, glass clear standard, 1/6 M20M- single ended through wiring with M20 metallic threads	12310170109
ExLin 7L-2 V-CG-S GCS 750 T1 2/6 M20M CRI 70	ExLin V-CG-S 7L-2 8120 lm double sided, glass clear standard, 2/6 M20M- double ended through wiring with M20 metallic threads	12310170111

Ordering details Pipe clamps

Pipe clamps



Scope of supply	Order No.
2 pcs. R12 (1 1/4"), Ø 38- 42 mm with screws and polyamide washer, hot-dip galvanized	2 2480 462 000 *
2 pcs. R22 (1 1/2"), Ø 47- 51 mm with screws and polyamide washer, hot-dip galvanized	2 2480 472 000 *
2 pcs. R32 (2"), Ø 56- 60 mm with screws and polyamide washer, hot-dip galvanized	2 2480 482 000 *
1 pcs. A8 (1 1/2") D 47- 51 mm for AB 12.. with screws and polyamide washer, hot-dip galvanized	NOR 000 005 009 211
1 pcs. A9 (2") D 56- 60 mm for AB 12.. with screws and polyamide washer, hot-dip galvanized	NOR 000 005 009 229
2 pcs. Two-part, for pipe mounting LB 48- FT with screws and polyamide washer, hot-dip galvanized	2 2480 550 010

Linear luminaire ExLin

Safety and Exit Sign Luminaires - Explosion protected

Ordering details fixing accessories

Scope of supply	Order No.
2 pcs. luminaire mounting bracket with 30° angle, wall mounting LH 30- FT, hot-dip galvanized	2 2480 550 013
2 pcs. luminaire mounting bracket with 45° angle, wall mounting LH 45- FT, hot-dip galvanized	2 2480 550 014
2 pcs. wall mounting bracket with 30° angle, with screws and polyamide washer, hot-dip galvanized	2 2480 000 122
1 pcs. wall bracket 45° with screws and polyamide washer, hot-dip galvanized	NOR 000 005 009 196
1 pcs. wall bracket W 27, 15°, for pole-mounting fitting Ø 42 mm, hot-dip galvanized	2 2483 027 000
2 pcs. ceiling mounting bracket D 92 with screws and polyamide washer, stainless steel	2 2480 092 000
1 pcs. ceiling mounting bracket A5 with screws and polyamide washer, hot-dip galvanized	NOR 000 005 009 162
2 pcs. C-bracket for luminaire mounting LAB-C50- ER, stainless steel	2 2480 550 011
2 pcs. hexagon screw M8 x 20 for luminaire mounting, with polyamide washer	2 2480 054 000
2 pcs. eye bolt M8 for luminaire mounting, hot-dip galvanized	2 2480 002 000 *
1 pcs. eye bolt M8- A1 for luminaire mounting, hot-dip galvanized	NOR 000 005 009 261
Pole mounting adapter- 42-49 mm diameter, stainless steel	22480600001
Pole mounting adapter- 52-62 mm diameter, stainless steel	22480600002
2 pcs. wall mounting bracket with adjustable angle (15° step)	2 2480 550 022 *

Ordering details metallic cable glands (order separately)

ADE-1F2



ADE-1F2

Metric Thread Size	Cable Types	Cable sealing range - Min	Cable sealing range - Max	Order No.
M20		2.8	5.5	ADE1M200NPN
M20	Non-armoured, Marine shipboard, Type P, Tray cable (armoured)	4.5	8.5	ADE1M201NPN
M20		7.0	12.0	ADE1M202NPN
M20		10.0	16.0	ADE1M203NPN

ADE-4F

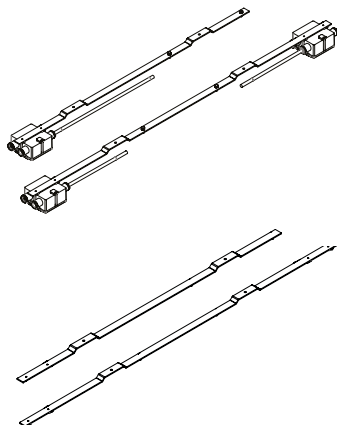


ADE-4F

Metric Thread Size	Cable Types	Cable sealing range inner sheath		Cable sealing range outer sheath		Armor		Order No.
		Min.	Max.	Min.	Max.	Min.	Max.	
M20	SWA, SWB, STA, Braided marine shipboard, Type P; Lead sheathed cable (with addition of earthing washer)	2.8	5.5	4.5	8.5	0.2	0.9	ADE4M200NPN
M20		4.5	8.0	7.0	12.0	0.2	0.9	ADE4M201NPN
M20		7.0	12.0	10.0	16.0	0.2	1.3	ADE4M202NPN
M20		10.0	15.5	13.5	21.0	0.2	1.3	ADE4M203NPN

ADE-1F2 and ADE-4F catalog numbers are for nickel-plated brass; For other material options, refer to our cable glands section within www.crouse-hinds.de/en/

Ordering details Adapter Kits for eLLK Retrofits (order separately)

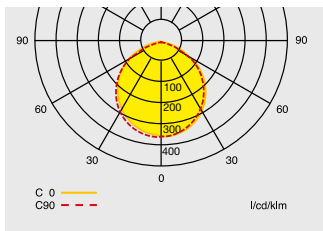


Scope of supply	Order No.
2 pcs. ExLin adapter kit for retrofitting to eLLK 2x36W fixture- includes metal bar, junction box, plastic glands and connection cable between box and fixture	2 2300 500 001
1 pcs. ExLin adapter kit for retrofitting to eLLK 2x58W fixture- includes metal bar, two junction boxes, plastic glands and connection cable between boxes and fixture	2 2300 500 002
1 pcs. ExLin mounting metal bar for retrofitting to eLLK 2x36W fixture- without junction box and connection cable	3 2300 500 001
1 pcs. ExLin mounting metal bar for retrofitting to eLLK 2x58W fixture- without junction box and connection cable- without junction box and connection cable	3 2300 500 002

See for yourself how easy it is to upgrade your eLLK lighting installation to our state-of-the-art ExLin LED solution!

Visit eaton.com/ellk-to-exlin to watch the fast and simple retrofit process using our adapter kit





Light distribution curve ExLin 3L-1 2750 lm
ExLin standard beam with clear cover

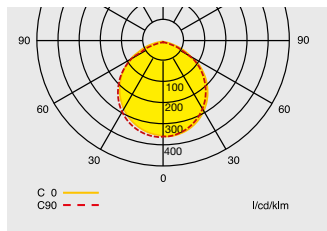
Planning help for ExLin 3L-1 2750 lm V-CG-S for E = 1.0 lx (0.5 lx)

Measuring level: 0.02 m, maintenance factor MF = 80 %, battery operation, distances in m

Mounting height [m]	Types of mounting	Types of mounting			
		L1	L2	L3	L4
3.0	Ceiling mounting	5.5 (6.7)	13.3 (15.9)	5.6 (6.4)	12.7 (15.1)
4.0	Exit route centre	6.3 (7.6)	15.1 (18.3)	6.2 (7.7)	15.3 (17.4)
5.0		6.7 (8.3)	16.7 (20.3)	6.7 (8.4)	16.9 (20.0)
6.0	Dim level 25%	6.9 (9.0)	18.0 (21.9)	6.9 (9.0)	18.0 (22.2)
7.0		7.0 (9.4)	18.9 (23.5)	7.0 (9.4)	18.8 (23.8)
8.0		7.0 (9.7)	19.4 (25.0)	7.0 (9.7)	19.4 (25.0)
9.0		6.7 (9.9)	19.8 (26.0)	6.7 (9.9)	19.8 (25.9)
10.0		6.3 (10.0)	19.9 (26.7)	6.4 (9.9)	19.9 (26.7)
4.0	Ceiling mounting	7.6 (9.2)	18.3 (21.9)	7.7 (8.7)	17.4 (20.7)
5.0	Exit route centre	8.3 (10.1)	20.3 (24.4)	8.4 (10.0)	20.0 (23.2)
6.0		9.0 (11.0)	21.9 (26.7)	9.0 (11.1)	22.2 (25.5)
7.0	Dim level 50%	9.4 (11.7)	23.5 (28.6)	9.4 (11.9)	23.8 (28.2)
8.0		9.7 (12.5)	25.0 (30.3)	9.7 (12.5)	25.0 (30.5)
9.0		9.9 (13.0)	26.0 (31.7)	9.9 (13.0)	25.9 (32.3)
10.0		10.0 (13.4)	26.7 (33.4)	9.9 (13.4)	26.7 (33.8)
11.0		9.9 (13.7)	27.3 (34.9)	9.9 (13.7)	27.3 (35.0)
5.0	Ceiling mounting	10.1 (12.2)	24.4 (28.9)	10.0 (11.6)	23.2 (27.5)
6.0	Exit route centre	11.0 (13.3)	26.7 (31.9)	11.1 (12.7)	25.5 (30.2)
7.0		11.7 (14.3)	28.6 (34.4)	11.9 (14.1)	28.2 (32.7)
8.0	Dim level 100%	12.5 (15.1)	30.3 (36.7)	12.5 (15.3)	30.5 (34.9)
9.0		13.0 (15.9)	31.7 (38.7)	13.0 (16.2)	32.3 (37.5)
10.0		13.4 (16.7)	33.4 (40.6)	13.4 (16.9)	33.8 (40.1)
11.0		13.7 (17.5)	34.9 (42.3)	13.7 (17.5)	35.0 (42.5)
12.0		13.9 (18.0)	36.1 (43.9)	13.9 (18.0)	36.0 (44.5)
3.0	Ceiling mounting	4.2 (5.0)	11.0 (13.2)	4.2 (4.8)	11.0 (12.6)
4.0	Room illumination	4.7 (5.6)	12.9 (15.1)	4.6 (5.6)	12.9 (15.1)
5.0		4.9 (6.1)	14.5 (17.1)	4.8 (6.0)	14.4 (17.1)
6.0	Dim level 25%	5.0 (6.6)	15.7 (18.9)	5.0 (6.3)	15.7 (18.8)
7.0		5.0 (6.7)	16.7 (20.4)	5.0 (6.6)	16.7 (20.4)
8.0		5.0 (6.8)	17.5 (21.7)	4.9 (6.7)	17.5 (21.7)
9.0		4.8 (6.8)	18.2 (22.8)	4.7 (6.8)	18.2 (22.8)
10.0		4.6 (6.9)	18.7 (23.8)	4.5 (6.8)	18.7 (23.7)
4.0	Ceiling mounting	5.7 (6.9)	15.3 (18.6)	5.5 (6.1)	14.9 (16.8)
5.0	Room illumination	6.2 (7.7)	17.1 (20.7)	6.1 (6.9)	17.1 (19.3)
6.0		6.6 (7.9)	18.9 (22.1)	6.4 (7.9)	18.8 (22.1)
7.0	Dim level 50%	6.8 (8.4)	20.4 (24.1)	6.7 (8.3)	20.3 (24.1)
8.0		6.8 (8.9)	21.7 (25.9)	6.8 (8.6)	21.7 (25.9)
9.0		6.9 (9.1)	22.8 (27.6)	6.8 (8.9)	22.8 (27.5)
10.0		6.9 (9.3)	23.8 (29.0)	6.8 (9.2)	23.7 (29.0)
11.0		6.9 (9.3)	24.6 (30.3)	6.8 (9.3)	24.5 (30.4)
5.0	Ceiling mounting	8.0 (8.6)	21.1 (23.9)	6.6 (8.4)	18.9 (22.6)
6.0	Room illumination	7.9 (10.3)	22.1 (27.6)	8.0 (8.4)	22.1 (24.2)
7.0		8.5 (10.7)	24.1 (29.2)	8.3 (9.5)	24.1 (27.1)
8.0	Dim level 100%	9.0 (11.5)	25.9 (31.4)	8.7 (9.9)	25.8 (29.2)
9.0		9.2 (11.3)	27.5 (32.3)	9.0 (11.3)	27.5 (32.4)
10.0		9.4 (11.8)	29.0 (34.3)	9.2 (11.6)	28.9 (34.3)
11.0		9.4 (12.3)	30.3 (36.1)	9.4 (11.9)	30.3 (36.1)
12.0		9.5 (12.6)	31.5 (37.8)	9.4 (12.2)	31.5 (37.8)

Linear luminaire ExLin

Safety and Exit Sign Luminaires - Explosion protected

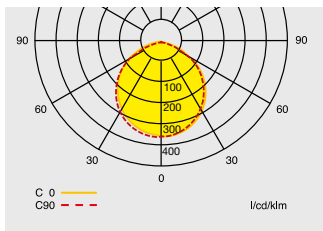


Light distribution curve ExLin 5L-1 5300 lm
ExLin standard beam with clear cover

Planning help for ExLin 5L-1 5300 lm V-CG-S for E = 1.0 lx (0.5 lx)

Measuring level: 0.02 m, maintenance factor MF = 80 %, battery operation, distances in m

Mounting height [m]	Types of mounting	Types of mounting			
		L1	L2	L3	L4
4.0	Ceiling mounting	6.6 (7.9)	15.7 (18.6)	6.5 (7.6)	15.2 (17.9)
5.0	Exit route centre	7.5 (9.1)	18.1 (21.6)	7.6 (8.9)	17.9 (20.8)
6.0		8.3 (10.1)	20.1 (24.1)	8.3 (10.1)	20.2 (23.5)
7.0	Dim level 25%	8.8 (10.9)	21.9 (26.4)	8.8 (11.0)	22.0 (26.2)
8.0		9.2 (11.7)	23.4 (28.4)	9.2 (11.7)	23.4 (28.4)
9.0		9.5 (12.3)	24.5 (30.1)	9.5 (12.3)	24.5 (30.3)
10.0		9.7 (12.7)	25.4 (31.8)	9.6 (12.7)	25.4 (31.8)
11.0		9.7 (13.1)	26.2 (33.2)	9.7 (13.1)	26.2 (33.2)
5.0	Ceiling mounting	10.1 (12.1)	24.1 (28.7)	10.1 (11.7)	23.5 (27.7)
6.0	Exit route centre	10.9 (13.2)	26.4 (31.5)	11.0 (13.1)	26.2 (30.4)
7.0		11.7 (14.2)	28.4 (33.9)	11.7 (14.2)	28.4 (33.0)
8.0	Dim level 50%	12.3 (15.1)	30.1 (36.3)	12.3 (15.2)	30.3 (35.8)
9.0		12.7 (15.9)	31.8 (38.4)	12.7 (15.9)	31.8 (38.3)
10.0		13.1 (16.6)	33.2 (40.3)	13.1 (16.6)	33.2 (40.4)
11.0		13.4 (17.2)	34.4 (42.0)	13.3 (17.2)	34.3 (42.3)
12.0		13.6 (17.7)	35.3 (43.8)	13.5 (17.7)	35.3 (44.0)
7.0	Ceiling mounting	14.2 (17.0)	33.9 (40.3)	14.2 (16.5)	33.0 (39.0)
8.0	Exit route centre	15.1 (18.2)	36.3 (43.2)	15.2 (17.9)	35.8 (41.7)
9.0		15.9 (19.2)	38.4 (45.8)	15.9 (19.1)	38.3 (44.3)
10.0	Dim level 100%	16.6 (20.1)	40.3 (48.2)	16.6 (20.2)	40.4 (47.0)
11.0		17.2 (21.0)	42.0 (50.6)	17.2 (21.2)	42.3 (49.8)
12.0		17.7 (21.9)	43.8 (52.9)	17.7 (22.0)	44.0 (52.4)
13.0		18.1 (22.7)	45.4 (54.9)	18.1 (22.7)	45.4 (54.8)
14.0		18.5 (23.4)	46.8 (56.7)	18.5 (23.4)	46.7 (56.9)
4.0	Ceiling mounting	4.8 (5.7)	12.9 (14.9)	4.8 (5.7)	12.8 (14.9)
5.0	Room illumination	5.4 (6.4)	14.9 (17.7)	5.6 (6.4)	15.0 (17.6)
6.0		6.4 (7.0)	17.3 (19.9)	5.7 (7.2)	16.3 (19.9)
7.0	Dim level 25%	6.6 (7.8)	18.5 (21.9)	6.4 (7.8)	18.4 (21.8)
8.0		6.8 (8.5)	20.0 (23.9)	6.5 (8.2)	19.9 (23.4)
9.0		6.7 (9.0)	21.3 (25.7)	6.7 (8.4)	21.3 (25.1)
10.0		6.7 (9.1)	22.4 (27.0)	6.7 (8.8)	22.5 (26.9)
11.0		6.7 (9.2)	23.4 (28.5)	6.6 (9.0)	23.4 (28.4)
5.0	Ceiling mounting	7.0 (8.4)	19.9 (23.3)	7.2 (8.4)	19.9 (23.3)
6.0	Room illumination	7.8 (9.1)	21.9 (25.8)	7.9 (9.2)	21.8 (25.8)
7.0		9.0 (9.7)	24.5 (28.1)	7.8 (9.9)	22.8 (28.0)
8.0	Dim level 50%	8.9 (10.4)	25.4 (30.1)	8.7 (10.6)	25.3 (30.0)
9.0		9.2 (11.3)	27.0 (32.3)	8.9 (10.9)	26.9 (31.5)
10.0		9.3 (12.0)	28.4 (34.1)	9.1 (11.4)	28.4 (33.2)
11.0		9.4 (12.3)	29.8 (35.6)	9.2 (11.9)	29.7 (35.2)
12.0		9.4 (12.7)	31.0 (37.3)	9.2 (12.0)	30.9 (36.8)
7.0	Ceiling mounting	9.7 (11.7)	28.0 (32.8)	10.0 (11.7)	28.0 (32.7)
8.0	Room illumination	10.4 (12.3)	30.0 (35.4)	10.7 (12.4)	30.0 (35.4)
9.0		11.1 (13.0)	31.8 (37.7)	11.3 (13.3)	31.9 (37.7)
10.0	Dim level 100%	11.8 (13.6)	33.6 (39.8)	11.8 (14.0)	33.6 (39.9)
11.0		12.2 (15.7)	35.3 (39.9)	12.1 (15.9)	35.4 (40.0)
12.0		12.6 (17.6)	37.0 (39.9)	12.3 (17.7)	37.0 (40.0)
13.0		12.8 (19.3)	38.6 (39.9)	12.4 (19.3)	38.5 (40.0)
14.0		12.9 (17.4)	39.9 (39.9)	12.7 (17.5)	40.0 (40.0)



Light distribution curve ExLin 7L-1 8120 lm
ExLin standard beam with clear cover

Planning help for ExLin 7L-2 8120 lm V-CG-S for E = 1.0 lx (0.5 lx)

Measuring level: 0.02 m, maintenance factor MF = 80 %, battery operation, distances in m

Mounting height [m]	Types of mounting	Types of mounting			
		L1	L2	L3	L4
4.0	Ceiling mounting	8.5 (10.2)	20.4 (24.1)	8.2 (9.6)	19.2 (22.7)
5.0	Exit route centre	9.4 (11.3)	22.7 (27.1)	9.4 (10.7)	21.4 (25.5)
6.0		10.1 (12.3)	24.6 (29.7)	10.1 (12.1)	24.2 (28.0)
7.0	Dim level 25%	10.8 (13.2)	26.3 (31.9)	10.7 (13.3)	26.5 (30.2)
8.0		11.2 (14.0)	27.9 (33.9)	11.2 (14.0)	28.1 (32.9)
9.0		11.5 (14.7)	29.3 (35.8)	11.5 (14.7)	29.3 (35.5)
10.0		11.8 (15.3)	30.5 (37.4)	11.8 (15.2)	30.4 (37.7)
11.0		11.9 (15.7)	31.4 (39.0)	11.9 (15.7)	31.4 (39.2)
6.0	Ceiling mounting	12.3 (14.9)	29.7 (35.2)	12.1 (14.0)	28.0 (33.2)
7.0	Exit route centre	13.2 (16.0)	31.9 (38.2)	13.3 (15.1)	30.2 (35.9)
8.0		14.0 (17.0)	33.9 (40.8)	14.0 (16.5)	32.9 (38.4)
9.0	Dim level 50%	14.7 (17.9)	35.8 (43.2)	14.7 (17.8)	35.5 (40.7)
10.0		15.3 (18.7)	37.4 (45.4)	15.2 (18.9)	37.7 (42.9)
11.0		15.7 (19.5)	39.0 (47.4)	15.7 (19.6)	39.2 (45.7)
12.0		16.1 (20.2)	40.5 (49.3)	16.1 (20.3)	40.6 (48.4)
13.0		16.4 (20.9)	41.9 (51.0)	16.4 (20.9)	41.8 (51.0)
8.0	Ceiling mounting	17.1 (20.5)	40.8 (48.3)	16.5 (19.2)	38.4 (45.6)
9.0	Exit route centre	18.0 (21.7)	43.2 (51.4)	17.8 (20.4)	40.8 (48.5)
10.0		18.8 (22.8)	45.4 (54.3)	18.9 (21.5)	43.0 (51.2)
11.0	Dim level 100%	19.5 (23.7)	47.4 (57.0)	19.6 (22.9)	45.7 (53.5)
12.0		20.2 (24.6)	49.3 (59.4)	20.3 (24.2)	48.4 (55.9)
13.0		20.9 (25.5)	51.0 (61.7)	20.9 (25.5)	51.0 (58.2)
14.0		21.5 (26.4)	52.7 (63.9)	21.5 (26.6)	53.0 (60.4)
15.0		22.0 (27.2)	54.3 (66.0)	21.9 (27.4)	54.7 (63.1)
4.0	Ceiling mounting	7.0 (7.4)	18.0 (20.1)	5.3 (7.0)	15.3 (18.5)
5.0	Room illumination	6.8 (8.6)	18.8 (23.4)	6.9 (7.3)	18.7 (20.7)
6.0		7.3 (9.4)	20.8 (25.4)	7.2 (8.1)	20.8 (23.2)
7.0	Dim level 25%	7.7 (9.4)	22.6 (26.5)	7.5 (9.5)	22.5 (26.3)
8.0		7.9 (10.1)	24.1 (28.9)	7.8 (9.6)	24.1 (28.2)
9.0		8.0 (10.3)	25.5 (30.5)	7.9 (10.1)	25.4 (30.4)
10.0		8.2 (10.5)	26.6 (32.1)	8.1 (10.4)	26.6 (32.2)
11.0		8.2 (10.8)	27.6 (33.7)	8.2 (10.6)	27.7 (33.7)
6.0	Ceiling mounting	9.8 (10.4)	25.9 (29.3)	7.8 (10.0)	22.7 (27.3)
7.0	Room illumination	9.8 (11.5)	27.0 (32.3)	9.1 (10.5)	25.8 (29.7)
8.0		9.9 (12.9)	28.5 (35.3)	9.9 (10.7)	28.5 (31.4)
9.0	Dim level 50%	10.3 (13.4)	30.5 (36.8)	10.1 (11.8)	30.4 (34.1)
10.0		10.7 (13.5)	32.1 (38.2)	10.4 (12.9)	32.1 (37.0)
11.0		10.8 (13.7)	33.6 (39.7)	10.7 (13.7)	33.7 (39.7)
12.0		11.1 (15.3)	35.1 (39.9)	10.9 (15.3)	35.0 (40.0)
13.0		11.1 (16.9)	36.3 (39.9)	11.1 (16.8)	36.4 (40.0)
8.0	Ceiling mounting	12.9 (13.8)	34.9 (39.3)	11.0 (14.0)	31.7 (37.9)
9.0	Room illumination	14.0 (15.1)	37.4 (39.9)	11.3 (16.0)	33.5 (40.0)
10.0		14.5 (18.0)	39.2 (39.9)	12.1 (18.2)	36.0 (40.0)
11.0	Dim level 100%	13.8 (17.4)	39.8 (39.9)	13.7 (17.5)	39.6 (40.0)
12.0		15.4 (18.4)	39.9 (39.9)	15.3 (18.5)	40.0 (40.0)
13.0		17.0 (18.4)	39.9 (39.9)	16.9 (19.5)	40.0 (40.0)
14.0		18.3 (19.4)	39.9 (39.9)	18.2 (19.5)	40.0 (40.0)
15.0		19.5 (19.4)	39.9 (39.9)	19.4 (20.5)	40.0 (40.0)