

3514 LED CG-S

Safety Luminaires for Escape Route Lighting



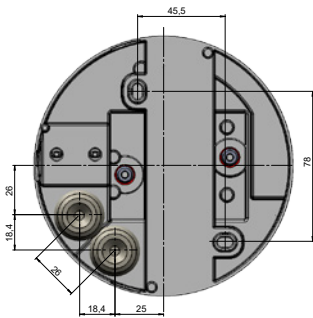
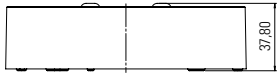
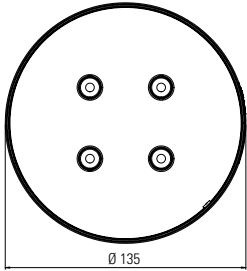
3514 LED CG-S

- Safety luminaire with LED technology for surface mounting with round enclosure
- A screw-less design and special snapping mechanism allows the Luminaire to be opened and closed easily and safely
- Unobtrusive appearance with 135 mm diameter and low profile of only 38 mm
- Up to 18 m from luminaire to luminaire for escape route and wide area illumination
- Minimum service requirement due to high service life of the LEDs (up to 50.000 hours)
- Shortened inspection effort due to CEWA GUARD technology
- Automatic function monitoring of up to 20 luminaires per circuit
- Reduced installation expenditure with STAR technology
- Freely programmable mixed operation of the switching modes per luminaire in one circuit

3514 LED CG-S



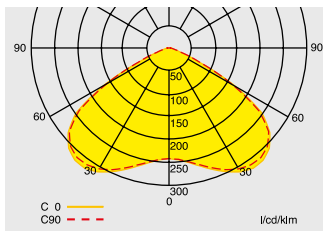
Dimensions in mm



Luminous flux Φ_N	512 lm
Luminous flux Φ_E/Φ_N at the end of rated operating time	100 %
Housing material	Bezel: Sheet steel
Housing colour	White sim. RAL 9016
Weight	0.45 kg
Type of mounting	Surface ceiling mounting
Connection terminals	Loop terminals 3 x 2.5 mm ²
Connection voltage	220 – 240 V AC, 50/60 Hz 176 – 275 V DC
Current consumption with battery operating	25 mA
Power consumption mains operation (apparent power / effective power)	9.5 VA / 5.8 W
Inrush current	1.5 A
Permissible temperature range	-10 °C to +40 °C
Light source	HighPower LEDs 4 x 1 W

Ordering details

Type	Scope of supply	Order No
3514 LED CG-S	Round LED surface ceiling-mounted luminaire with 4 x HighPower LEDs, including LED Supply and CG-S technology (20 addresses) in enclosure with stainless steel bezel	40071350381



Light distribution curve 3514 LED CG-S

Engineering help for 3514 LED CG-S for E = 1.0 Lx (0.5 lx)

Measuring level 0.02 m. maintenance factor MF = 80 %. battery operation. distances in m

Mounting height [m]	Types of mounting	L1	L2	L3	L4
2.5	Ceiling mounting	4.6 (5.3)	10.6 (12.1)	4.6 (5.3)	10.6 (12.1)
3.0	Escape route centre	5.1 (6.0)	11.9 (13.6)	5.2 (6.0)	11.9 (13.6)
3.5		5.5 (6.5)	13.0 (14.9)	5.6 (6.5)	13.0 (14.9)
4.0		5.9 (7.0)	14.0 (16.2)	5.9 (7.1)	14.1 (16.2)
4.5		6.1 (7.5)	14.9 (17.4)	6.1 (7.5)	14.9 (17.4)
5.0		6.3 (7.9)	15.7 (18.5)	6.3 (7.9)	15.7 (18.5)
5.5		6.4 (8.2)	16.3 (19.5)	6.5 (8.2)	16.4 (19.6)
6.0		6.5 (8.5)	16.9 (20.5)	6.5 (8.5)	17.0 (20.5)
6.5		6.5 (8.7)	17.3 (21.3)	6.5 (8.7)	17.4 (21.3)
7.0		6.4 (8.9)	17.7 (22.0)	6.5 (8.9)	17.8 (22.1)
7.5		6.4 (9.0)	18.0 (22.7)	6.4 (9.1)	18.1 (22.8)
8.0		6.2 (9.1)	18.1 (23.4)	6.2 (9.1)	18.2 (23.5)
8.5		5.9 (9.1)	18.2 (23.9)	5.9 (9.2)	18.3 (24.0)
9.0		5.5 (9.2)	18.3 (24.3)	5.5 (9.2)	18.3 (24.4)
9.5		4.9 (9.1)	18.2 (24.7)	4.9 (9.2)	18.3 (24.8)
10.0		3.9 (9.1)	18.1 (25.1)	3.9 (9.1)	18.1 (25.2)
2.5	Ceiling mounting	3.6 (4.2)	8.5 (9.5)	3.6 (4.2)	8.5 (9.5)
3.0	Room illumination	4.0 (4.5)	9.6 (10.8)	3.9 (4.5)	9.5 (10.8)
3.5		4.3 (4.9)	10.5 (12.0)	4.3 (4.8)	10.5 (11.9)
4.0		4.6 (5.3)	11.4 (13.1)	4.6 (5.2)	11.4 (13.0)
4.5		4.7 (5.7)	12.3 (14.0)	4.7 (5.6)	12.3 (14.0)
5.0		4.8 (5.9)	13.1 (14.9)	4.8 (6.0)	13.1 (15.0)
5.5		4.9 (6.2)	13.8 (15.9)	4.9 (6.2)	13.8 (15.9)
6.0		5.0 (6.4)	14.5 (16.8)	4.9 (6.3)	14.5 (16.8)
6.5		4.9 (6.5)	15.1 (17.6)	4.8 (6.5)	15.1 (17.7)
7.0		4.9 (6.6)	15.7 (18.4)	4.7 (6.6)	15.6 (18.4)
7.5		4.7 (6.8)	16.2 (19.2)	4.5 (6.6)	16.1 (19.1)
8.0		4.5 (6.8)	16.6 (19.9)	4.4 (6.7)	16.6 (19.8)
8.5		4.2 (6.8)	17.0 (20.6)	4.1 (6.7)	17.0 (20.5)
9.0		4.0 (6.8)	17.4 (21.1)	3.7 (6.7)	17.3 (21.1)
9.5		3.6 (6.7)	17.7 (21.7)	3.4 (6.6)	17.6 (21.7)
10.0		3.0 (6.6)	17.9 (22.2)	3.0 (6.5)	17.9 (22.2)